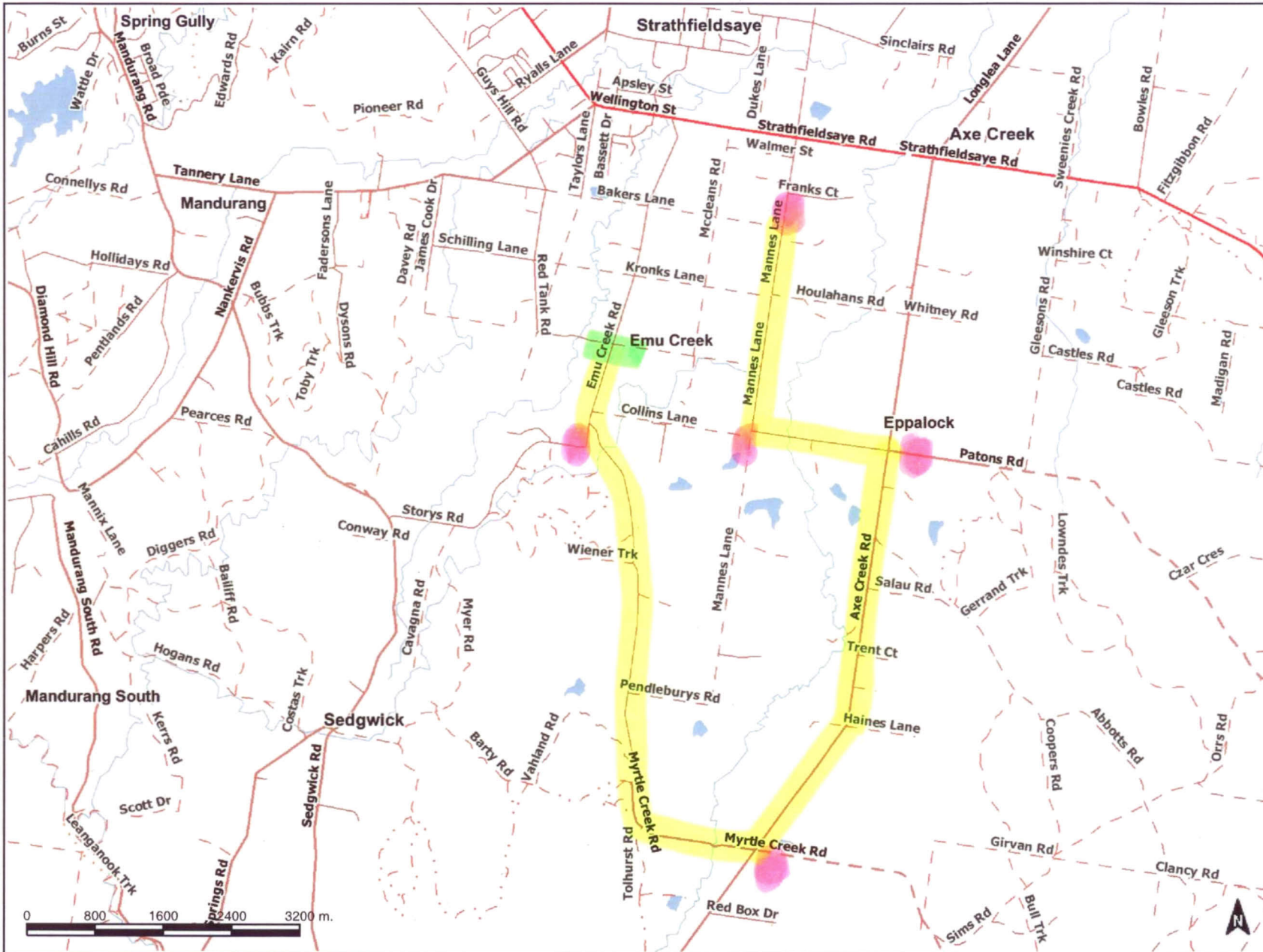


32km Emu Creek



TOWNS

ROADS2

- Freeway
- Highway
- Main Road
- Main Road (Unsealed)
- Collector
- Collector (Unsealed)
- Local
- Local (Unsealed)
- 2WD
- 2WD (Unsealed)
- 4WD Only
- Proposed
- Other Track
- Cycle Track

WATERCOURSES

- Named Watercourse

WATERBODY BOUNDARIES

- Permanent Waterbody
- Wetland Area

WATERBODIES

- Ocean
- Other States

Start/Finish

- Start/Finish

Course

- Course

Marshalls

- Marshalls



Disclaimer: This map is a snapshot generated from Victorian Government data. This material may be of assistance to you but the State of Victoria does not guarantee that the publication is without flaw of any kind or is wholly appropriate for your particular purposes and therefore disclaims all liability for error, loss or damage which may arise from reliance upon it. All persons accessing this information should make appropriate enquiries to assess the currency of the data.

MAP 1